

FOR LEASE

5310 W. VILLAGE PARKWAY, SUITE 4 | VILLAGE ON THE CREEKS, ROGERS, AR

Village on the Creeks is the largest garden office park in Northwest Arkansas. It houses office, retail, restaurant, and medical tenants and enhances quality of life by offering a walking trail on Razorback Greenway and a lake with beautiful views. Suite 4 offers seven offices, a reception area, conference room, and restrooms.



Suite 4
3,351 SF



7 Offices
Reception Area
Conference Room
Restrooms

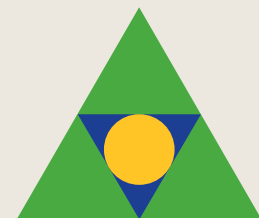


Direct access to
Razorback Greenway
and walking trails in a
beautiful setting



Quick and easy
access to
Interstate 49

\$22.50 PSF
+ Gas and Electric



Devereux
Real Estate Investments

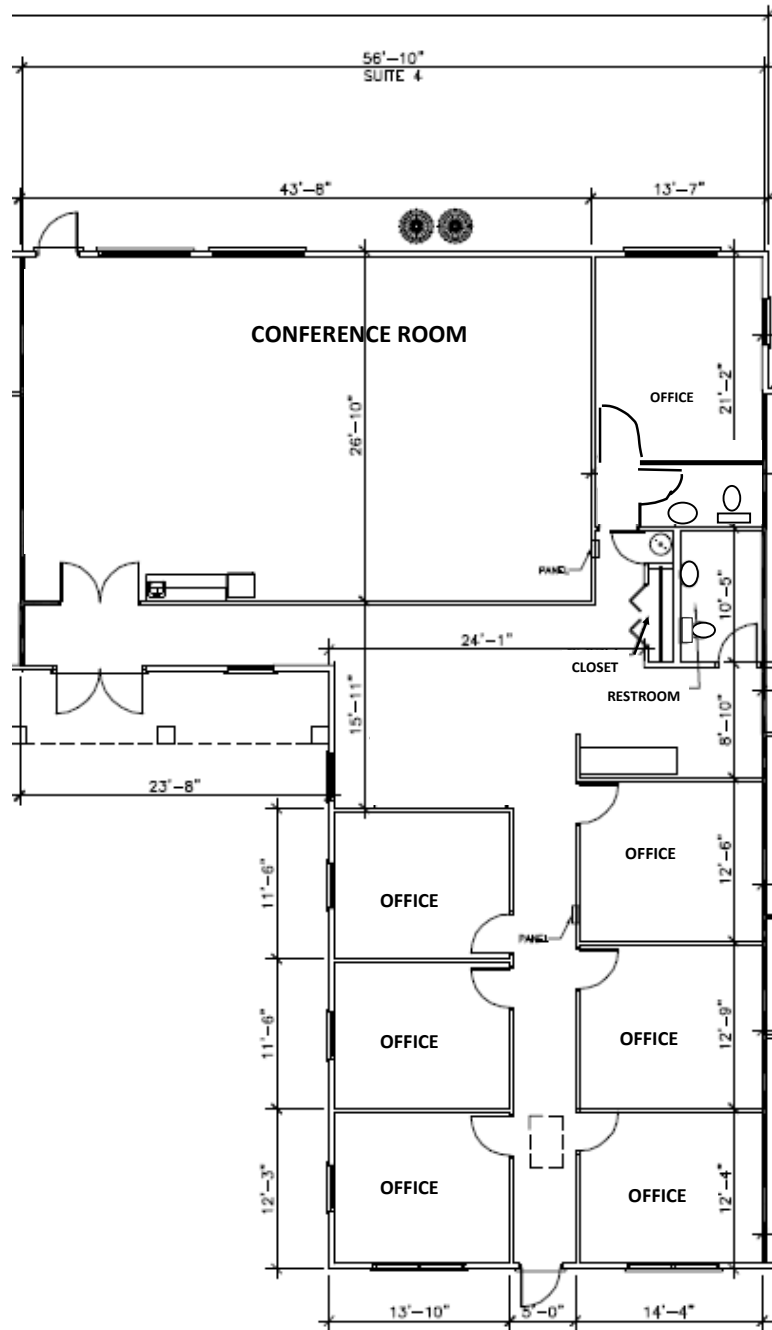
PAT MORRISON
EXECUTIVE BROKER

5309 W. VILLAGE PKWY | SUITE 2
ROGERS, AR 72758
P. 479-464-4292
C. 479-936-4200
PatMorrison@DevereuxREI.com

FLOOR PLAN

**5310 W. Village Parkway
Suite 4**

- 3551 SF
- 7 Offices
- Reception Area
- Conference Room
- Restrooms



Devereux
Real Estate Investments

PAT MORRISON
EXECUTIVE BROKER

5309 W. VILLAGE PKWY | SUITE 2
ROGERS, AR 72758
P. 479-464-4292
C. 479-936-4200
PatMorrison@DevereuxREI.com



PAT MORRISON
EXECUTIVE BROKER

5309 W. VILLAGE PKWY | SUITE 2
ROGERS, AR 72758
P. 479-464-4292
C. 479-936-4200
PatMorrison@DevereuxREI.com

