

# FOR LEASE

**5208 W. VILLAGE PARKWAY, SUITE 1 | VILLAGE ON THE CREEKS, ROGERS, AR**

Village on the Creeks is the largest garden office park in Northwest Arkansas, offering premier office, retail, and restaurant spaces in a beautiful lake setting adjacent to the Razorback Greenway Trail System. Suite 1 is an open-concept plan with two offices (one with private restroom), Conference Room, IT Room, and more.



**Suite 1**  
**3,710 SF**  
**Two Offices**



**IT Room**  
**Breakroom**  
**Conference Room**  
**Work/File Room**

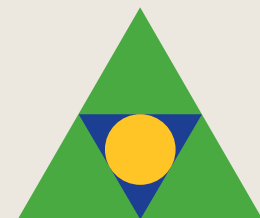


**Direct access to**  
**Razorback Greenway**  
**and walking trails in a**  
**beautiful setting**



**Quick and easy**  
**access to**  
**Interstate 49**

**\$21.50 PSF**  
**+ Gas and Electric**



**Devereux**  
Real Estate Investments

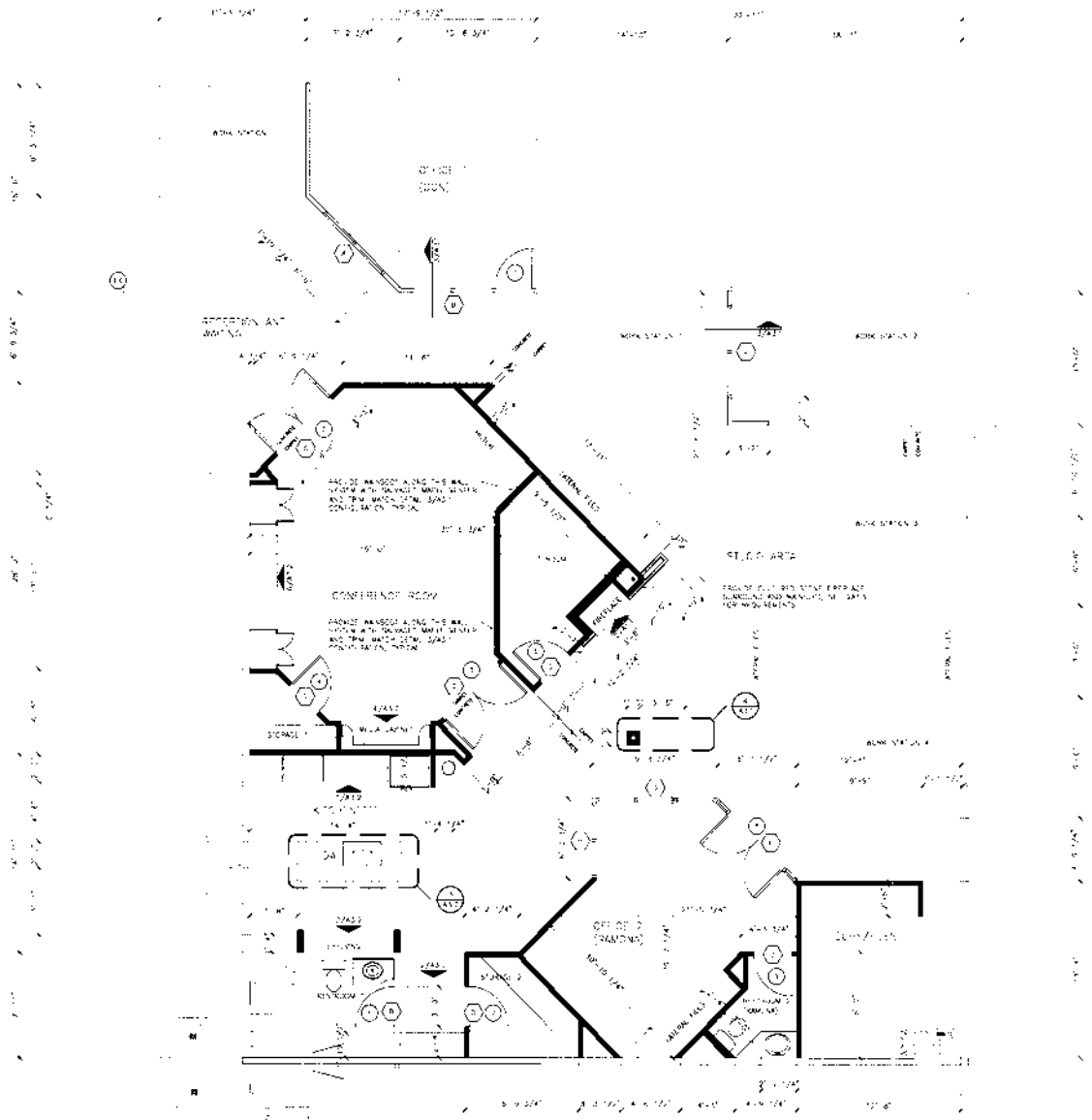
**PAT MORRISON**  
**EXECUTIVE BROKER**

**5309 W. VILLAGE PKWY | SUITE 2**  
**ROGERS, AR 72758**  
**P. 479-464-4292**  
**C. 479-936-4200**  
**PatMorrison@DevereuxREI.com**

# FLOOR PLAN

## 5208 W. Village Parkway Suite 1

- 3,710 SF
- Rent includes \$5 PSF CAM
- Open Concept
- Two Offices  
(one with Restroom)
- IT Room
- Workstation Areas
- Reception Area
- Open Break Room
- Conference Room
- Work/File Room
- Glass Windows all around; overlooks green-space Courtyard
- Two Restrooms
- Fireplace



**Devereux**  
Real Estate Investments

**PAT MORRISON**  
EXECUTIVE BROKER

5309 W. VILLAGE PKWY | SUITE 2  
ROGERS, AR 72758  
P. 479-464-4292  
C. 479-936-4200  
[PatMorrison@DevereuxREI.com](mailto:PatMorrison@DevereuxREI.com)





**PAT MORRISON**  
EXECUTIVE BROKER

5309 W. VILLAGE PKWY | SUITE 2  
ROGERS, AR 72758  
P. 479-464-4292  
C. 479-936-4200  
[PatMorrison@DevereuxREI.com](mailto:PatMorrison@DevereuxREI.com)







**PAT MORRISON**  
EXECUTIVE BROKER

5309 W. VILLAGE PKWY | SUITE 2  
ROGERS, AR 72758  
P. 479-464-4292  
C. 479-936-4200  
PatMorrison@DevereuxREI.com

