

FOR LEASE



5305 W. VILLAGE PARKWAY, SUITE 8 | VILLAGE ON THE CREEKS, ROGERS, AR

Village on the Creeks is the largest garden office park in Northwest Arkansas, offering premier office, retail, and restaurant spaces in a beautiful lake setting adjacent to the Razorback Greenway Trail System. Suite 8 consists of five offices, reception area, and break room.



**Suite 8:
1,498 SF**



**5 Offices
Reception Area
Break Room
Bathroom**



**Direct access to
Razorback Greenway
and walking trails in a
beautiful setting**



**Quick and easy
access to
Interstate 49**

**\$21.00 PSF
+ Gas and Electric**



Devereux
Real Estate Investments

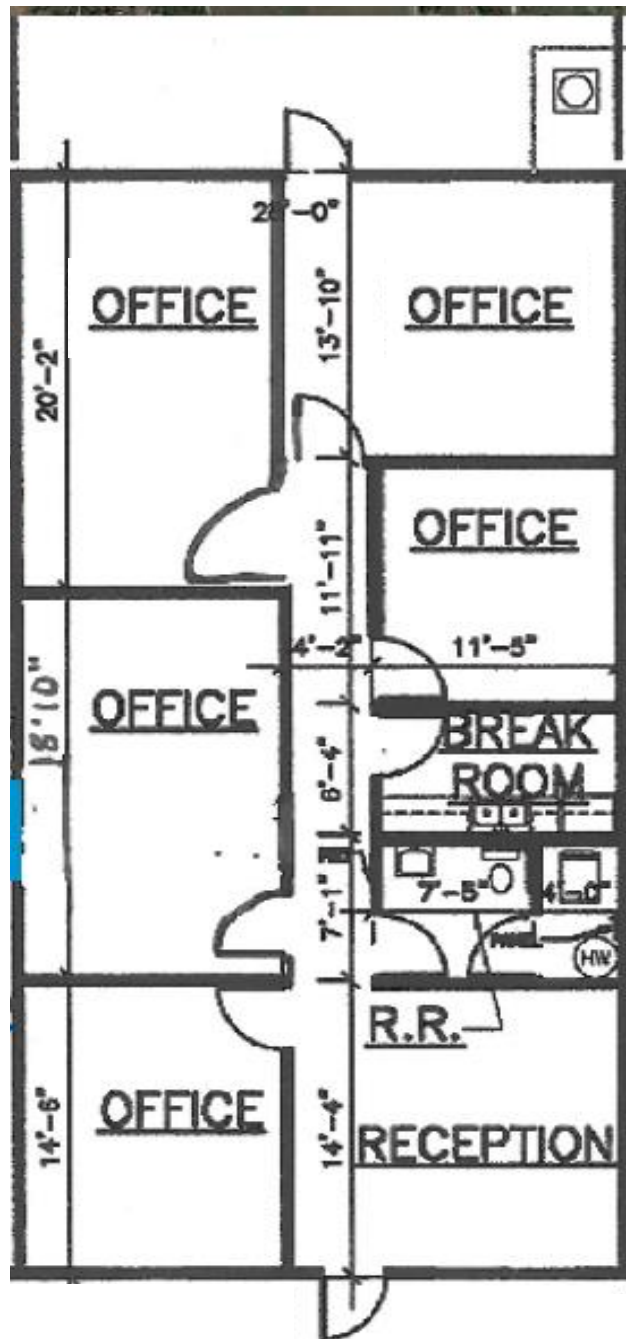
**PAT MORRISON
EXECUTIVE BROKER**

**5309 W. VILLAGE PKWY | SUITE 2
ROGERS, AR 72758
P. 479-464-4292
C. 479-936-4200
PatMorrison@DevereuxREI.com**

FLOOR PLAN

**5305 W. Village Parkway
Suite 8**

- 1,498 SF
- Five Offices
- Reception Area
- Breakfast Room
- Bathroom



Devereux

Real Estate Investments

PAT MORRISON
EXECUTIVE BROKER

5309 W. VILLAGE PKWY | SUITE 2
ROGERS, AR 72758
P. 479-464-4292
C. 479-936-4200
PatMorrison@DevereuxREI.com



PAT MORRISON
EXECUTIVE BROKER

5309 W. VILLAGE PKWY | SUITE 2
ROGERS, AR 72758
P. 479-464-4292
C. 479-936-4200
PatMorrison@DevereuxREI.com

